

Supports
LiveCode
Widgets



FmPro Migrator Platinum Edition

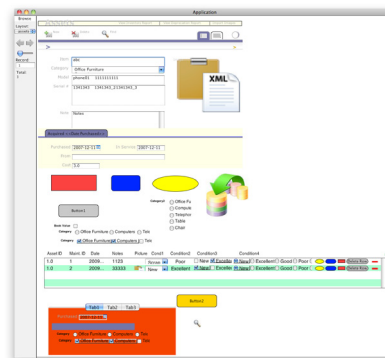
The LiveCode conversion tool

Convert FileMaker® Pro, Microsoft® Access® & Visual FoxPro - Tables, Layouts/Forms, Relationships & Scripts into LiveCode applications

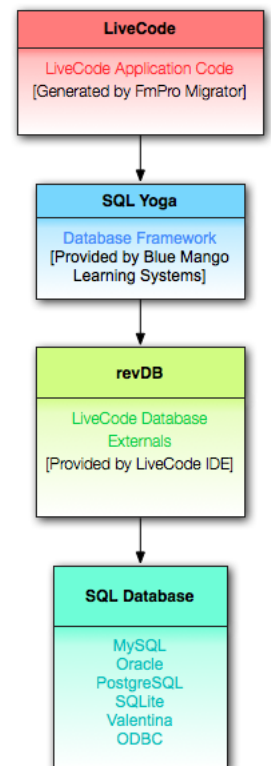
Top 10 Features

- Instantly generate functional LiveCode database apps, with insert/query/update/delete features.
- Offshore to your desktop, process files locally, using FmPro Migrator Platinum Edition.
- Automated conversion of Layouts/Forms/Reports into LiveCode stack files.
- FileMaker Pro scripts are converted into executable LiveCode code.
- Utilize SQL Yoga and LiveCode Data Grid technology for sophisticated database functionality.
- Supports relationships to related tables and fields on the same form and within Data Grids.
- Fill-in field queries includes AND/OR record searching feature.
- Found set record processing includes scrolling thru records, new record/delete record features.
- Converts Tab Controls into LiveCode tab panel or segmented widget groups including embedded objects and hide/show scripting.
- Saves weeks of development effort writing a full featured database application.

Layout to Card Conversion



SQL Yoga Database Framework



SQL Yoga Relationships

```

on doObject createTables
  ## Create Table Objects in order to define relationships
  doObject_createTables('maintenance_record')
  doObject_createTables('asset_management')

  ## Now that table objects exist, create relationships
  createRelationships

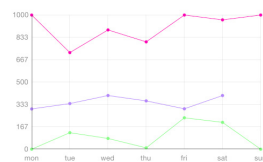
end doObject createTables

private command _CreateRelationships
  ## Relationship getRelationshipName - Forward
  doObject_createTables('maintenance_record_to_asset_management')
  doObject_createTables('asset_management_to_maintenance_record')
  doObject_createTables('maintenance_record_to_asset_management')
  doObject_createTables('asset_management_to_maintenance_record')

  ## Relationship getRelationshipName - Reverse
  doObject_createTables('asset_management_to_maintenance_record')
  doObject_createTables('maintenance_record_to_asset_management')
  doObject_createTables('maintenance_record_to_asset_management')
  doObject_createTables('asset_management_to_maintenance_record')

end _CreateRelationships
  
```

Chart to lineGraph Widget



Portal to Data Grid Conversion

Asset ID	Make ID	Date	Notes	Picker	Cost	Condition	Condition	Condition
1.0	1	2009	None	Good	Medium	Good	None	Good
1.0	2	2009	None	Good	Medium	Good	None	Good



Solution.pjx

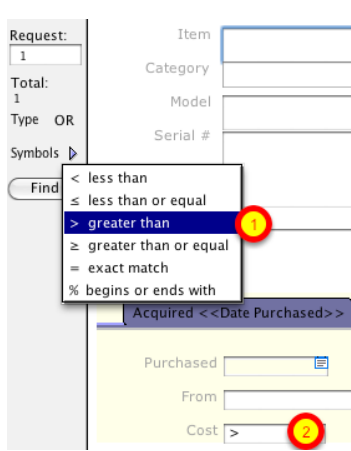


Assets.fmp12



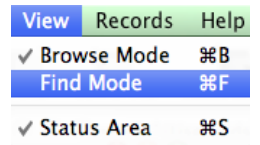
Northwind 2007.accdb

87 Layouts Processed in 15.3 Sec.
147 Scripts Processed.



Query By Example & Found Set Processing

FmPro Migrator generates sophisticated Query By Example infrastructure enabling your application's users to enter Find Mode, fill in the appropriate fields and then press the Find button to retrieve the records.



Search criteria symbols are implemented with a handy pop-up menu, which inserts the requested symbol into the currently selected field.

Once the user clicks the Find button, the search conditions are gathered from each of the fields and a SQL Yoga query is run against the SQL database.

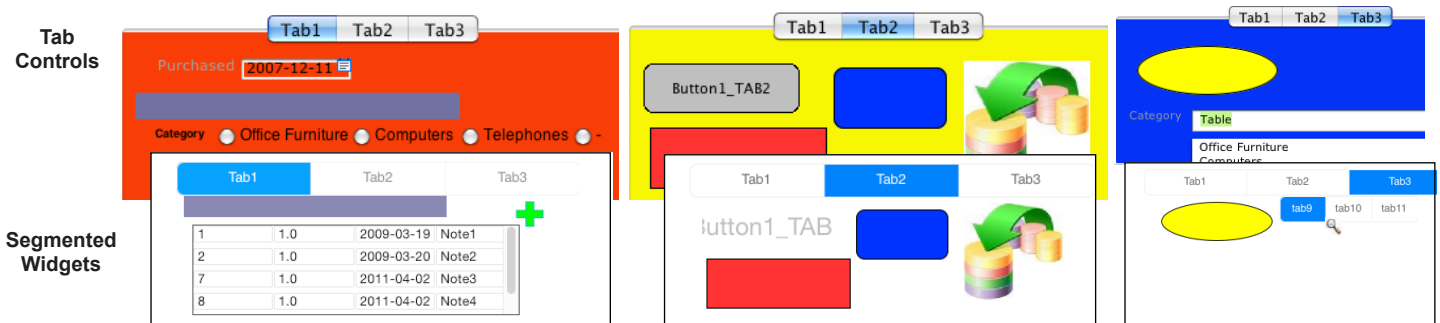
Portal to Data Grid Conversion

FileMaker Portals and Microsoft Access SubForms are converted into LiveCode Data Grid objects. Each Data Grid includes fields, menus, checkboxes, radio button groups, image objects and button objects. The alternate row color info from the original Portal is also configured within the Data Grid. Related records are gathered based upon a conversion of the original database relationships in order to automatically fill the Data Grid with related records. Each field of data is drawn to utilize the TruncateTail Data Grid function, as shown for the Date and Notes fields above. Image fields, drop down menus, pop-up menus, checkbox groups, radio button groups, oval, rectangle, rounded rectangle, button and image objects are drawn in the same positions within the Data Grid as they were originally located within the portal object.

Asset ID	Maint. ID	Date	Notes	Picture	Cond1	Condition2	Condition3	Condition4
1.0	1	2009...	Note...		New	Good	<input checked="" type="checkbox"/> New <input type="checkbox"/> Excellent <input type="checkbox"/> New <input type="checkbox"/> Excellent	<input type="radio"/> Good <input type="radio"/> Poor
1.0	2	2009...	Note...		Good	Scrap	<input type="checkbox"/> New <input type="checkbox"/> Excellent <input type="checkbox"/> New <input type="checkbox"/> Excellent	<input type="radio"/> Good <input checked="" type="radio"/> Poor

Tab Control to LiveCode Tab Panel Group or Segmented Widget Conversion

FmPro Migrator converts each individual tab of a Tab Control into a Tab Panel or segmented widget object within a group having the same name as the Tab Panel. Each object within the particular Tab is created within this group.



Customized Card Handlers

FmPro Migrator generates hundreds lines of customized LiveCode code within each card of the converted stack. These handlers include:

clearAllPortalContents - Sets the dgData to empty for each Data Grid on the card. This handler runs when all fields and Data Grids are cleared when entering Find Mode. All of the fields are cleared in preparation

deleteRecord - Deletes the currently displayed record in Browse mode or Found Set mode.

findRecords - Gathers user-specified search criteria from each of the fields on the card, and formulates a SQL Yoga query to find the records. Displays a dialog with Cancel/Modify Find options if no records were found.